

ComforTrack™ Plus

ENERGY SAVING SIDETRACK SYSTEM

CERTIFIED

**FEDERAL
TAX CREDIT
FOR ENERGY
EFFICIENCY**

See last page for more info.

“Close the Gap”

**Cut your energy loss by two-thirds*
and Earn Energy Tax Credits!**

With the cost of heating your home rising, you need all the help you can get to keep the warm air in and the cool air out. Close the Gap! With the ComforTrack™ Plus Insulation System from Comfortex you can close the gap around your windows to stop the energy leaks that unnecessarily inflate your heating bills. And, thanks to the American Reinvestment & Recovery Act of 2009, save even more with Energy Tax Credits!



NO SHADE

Leaving windows uncovered in cold weather is like going outside without a jacket.



ADD A SYMPHONY CELLULAR SHADE

Adding an insulating cellular shade with standard hardware is like putting a jacket on your window. It makes you feel more comfortable. But, if it's not zipped, it's not enough.



ZIP IT UP WITH COMFORTRACK PLUS!

Use ComforTrack™ Plus Energy Saving Sidetrack Insulation System to close the gap. The ComforTrack Plus Insulation System locks out the cold and seals in the heat. For ultimate energy savings select Symphony® Blackout fabric as part of your ComforTrack Plus Insulating System for a two-thirds* reduction in energy loss.



Where Innovation is Always in Fashion™

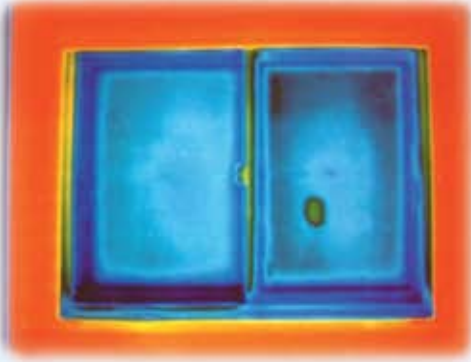
*Compared to an uncovered single pane window.

ComforTrack™ Plus

ENERGY SAVING SIDETRACK SYSTEM

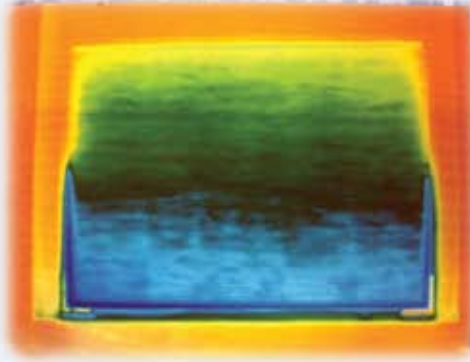
See the Difference

This window was photographed in a controlled laboratory setting using thermal photography, a process which distinguishes temperature zones as indicated by the color transitions. See the difference a Symphony Shade with ComforTrack Plus makes compared to an uncovered window.



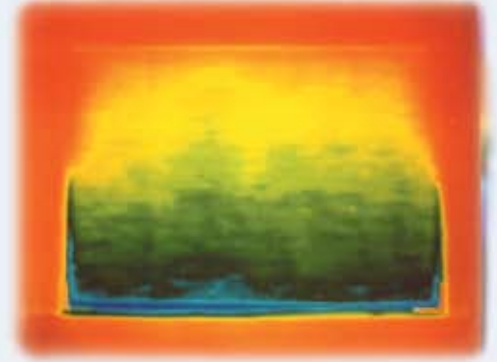
UNCOVERED WINDOW

The blue color in this photo indicates the temperature loss of an uncovered, single pane window.



WINDOW WITH SYMPHONY FABRIC

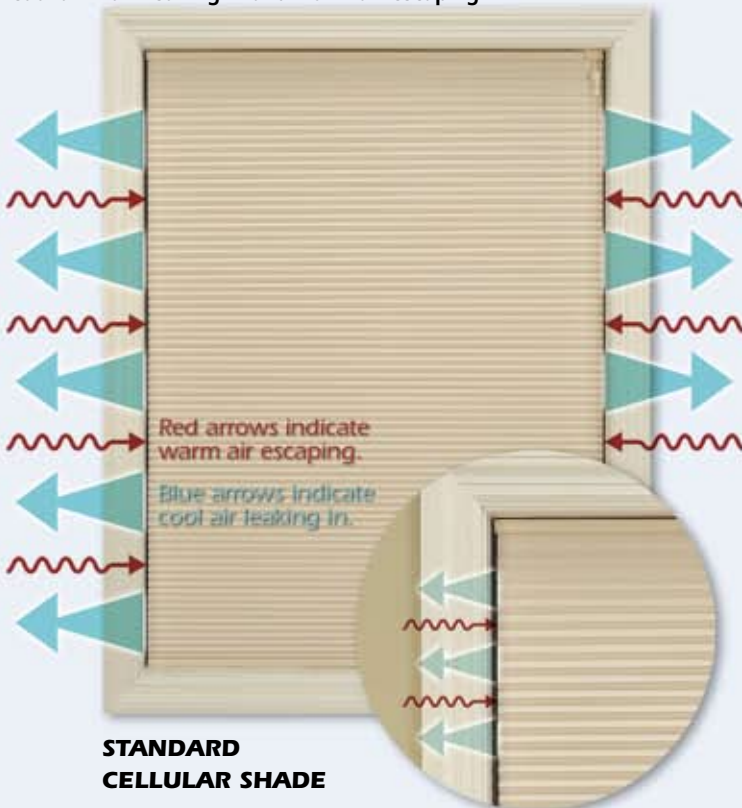
This photo shows the same window wearing a Symphony Cellular Shade with standard hardware. Note the color gradation from blue to green to yellow. The warmer colors indicate a temperature increase due to the inherent insulating effect of cellular fabric.



WINDOW WITH SYMPHONY FABRIC AND COMFORTTRACK PLUS

Add the ComforTrack Plus Energy Saving Sidetrack Insulation System and the coldest blues fade away! Energy leaks are nearly eliminated since ComforTrack Plus seals the gap between the fabric edge and window frame.

Compare a standard cellular shade to the ComforTrack Plus Energy Saving Sidetrack Insulation System. Notice the large gaps between the edge of the standard shade and the window frame. The gaps allow cool air from the window surface to leak into your room while warm air is escaping. See the difference when you use the ComforTrack Plus Insulation System versus a cellular shade alone! ComforTrack Plus closes the gap, preventing cool air from leaking in and warm air escaping.



STANDARD CELLULAR SHADE

The gaps seen between the standard cellular shade and window frame are obvious. With gaps this significant, there is an energy loss where cool air leaks through and warm air escapes.



COMFORTTRACK PLUS

Use ComforTrack Plus Energy Saving Sidetrack Insulation System to seal all the gaps between the fabric edge and window frame.

INNOVATIVE TECHNOLOGY



EASY TO INSTALL

The ComforTrack Plus Insulation System is easy to install, and features removable sidetracks that are attached to the window frame with magnets. The durable, UV stable sidetracks are available in white or brown to match your existing trim.



INNOVATIVE END CAPS

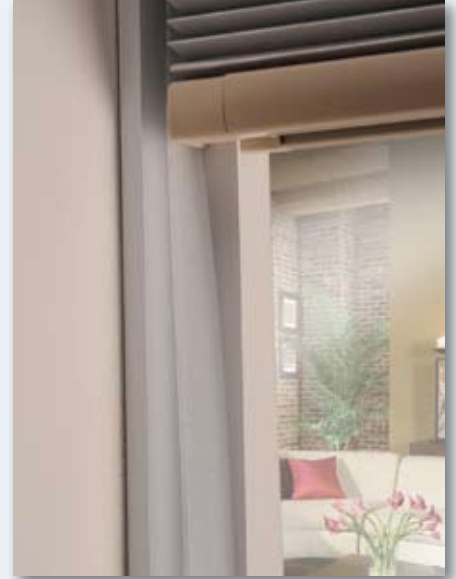
The specially designed bottom rail end caps fit over the sidetracks and allow for smooth movement when raising and lowering the shade.

CLOSING THE GAP: ENERGY GAP BARRIERS



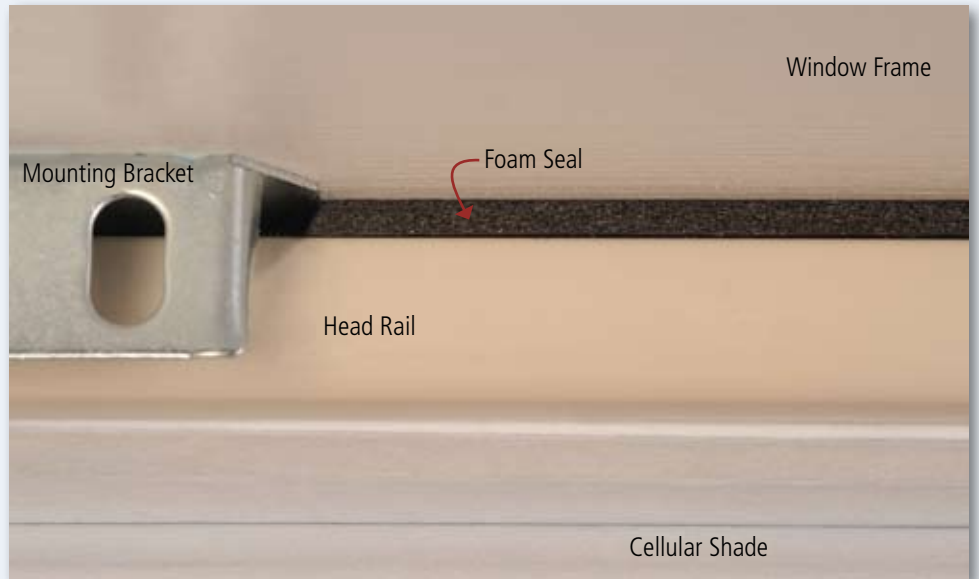
1ST ENERGY GAP BARRIER - SIDETRACKS

The sidetracks of ComforTrack Plus Energy Saving Sidetrack Insulation System are the first defense against your window's energy gap. The sidetracks seal off the gap between the shade and window to create a solid insulating barrier.



2ND ENERGY GAP BARRIER - FLEX SEAL

The ComforTrack Plus Flex Seal is a clear spring seal that is hidden between the cellular shade and the sidetracks. It flexes open and closed when the shade is raised and lowered to help create an energy tight seal.



3RD ENERGY GAP BARRIER - FOAM SEAL

The final barrier is easy to miss, but makes a big impact in closing the energy gap. The small space between the head rail and the window frame is sealed off with the Foam Seal which is discretely attached to the back of the head rail.



ComforTrack™ Plus Energy Saving Sidetrack Insulation System is Certified for Federal Tax Credit for Energy Efficiency.

Earn up to \$1500 in Federal Tax Credits for Energy Efficiency in 2009 & 2010!

Get on Track with ComforTrack Plus for Federal Tax Credits

ComforTrack Plus Energy Saving Sidetrack Insulation System is certified for the Federal Tax Credit on existing homes for Energy Efficiency. A tax credit allows you to deduct, dollar for dollar, from the taxes you owe. For more information go to www.irs.gov or consult your tax advisor.

Insulate to save on your energy bills and taxes!

We all like getting money back at tax time. ComforTrack Plus Energy Saving Sidetrack Insulation System does just that! Get a tax credit of 30% of the purchase price up to a maximum of \$1,500 when you insulate your windows with ComforTrack Energy Saving Sidetrack Insulation System. You'll cut your energy and tax bill all at the same time!

It's as easy as 1-2-3 to earn Federal Tax Credits for Energy Efficiency

- 1** Insulate your existing home's windows with Comfortex ComforTrack Energy Saving Sidetrack Insulation System between January 1, 2009 and December 31, 2010.
- 2** Save your receipts from your Comfortex dealer that reflect the itemized cost of Comfortex ComforTrack Energy Saving Sidetrack Insulation System.
- 3** Download the Manufacturer's Certification Statement at <http://www.comfortex.com/taxcredit.html>. Fill it out, and take it along with your itemized receipts to your tax professional to claim 30% of the cost of the Comfortex ComforTrack Plus Energy Saving Sidetrack Insulation System, up to \$1500.00 on your taxes.

It's easy for the Comfortex Dealer, too!

- 1** Place into service the ComforTrack Plus Energy Saving Sidetrack Insulation System by December 31, 2010.
- 2** Provide your customer an itemized receipt showing cost of the ComforTrack Plus Energy Saving Sidetrack Insulation System.

The ComforTrack Plus Energy Saving Sidetrack Insulation System is an Eligible Building Envelope Component and meets the requirements for the Nonbusiness Energy Credit under Section 25C of the American Reinvestment and Recovery Act of 2009. The ComforTrack Plus Insulation System is specifically and primarily designed to reduce heat loss or gain in a house. Visit www.energystar.gov to learn about more about eligible federal tax credits for existing homes. Homeowners should consult their tax advisor to determine whether they qualify for income tax credits.